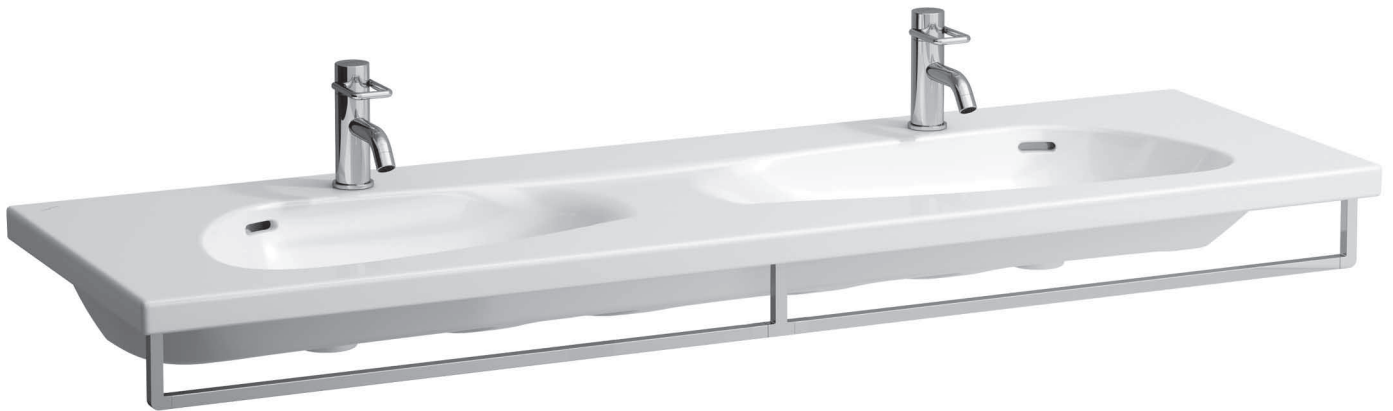


SET PALOMBA COLLECTION

Double countertop basin

81480.9



TECHNICAL DATA

Order no.	81480.9
Certified to	EN 14688
Dimensions	1600 x 500 mm
Inside dimensions of the basin	left 530 x 320 mm, right 660 x 320
Specification	Charge 104 – per basin 1 tap hole
Special specification	Charge 109 – without tap holes Charge 111 – per basin 1 tap hole, without overflow Charge 112 – without tap holes, without overflow
Weight	44,0 kg
Accessories excl.	Towel rail, order no. 38180.4
Mounting acc. excl.	valve without overflow always open, with ceramic valve cover plate, order no. 89818.4 2x Mounting set M10 x 140 mm, order no. 89988.2
Colours	see colour table

SPECIFICATION TEXT

Double countertop basin Laufen-PALOMBA COLLECTION, sanitary ceramic
EN 14688
dimensions 1600 x 500 mm, angular
per basin 1 tap hole
Special feature: overflow channel glazed
Further options / accessories: Surface refinement LCC (only white), without tap holes, per basin 1 tap hole without overflow, without tap holes and overflow, valve without overflow, towel rail 38180.4, bathtubs, shower trays, furniture
Order no. 81480.9

TECHNICAL DRAWINGS / S 1 : 20

